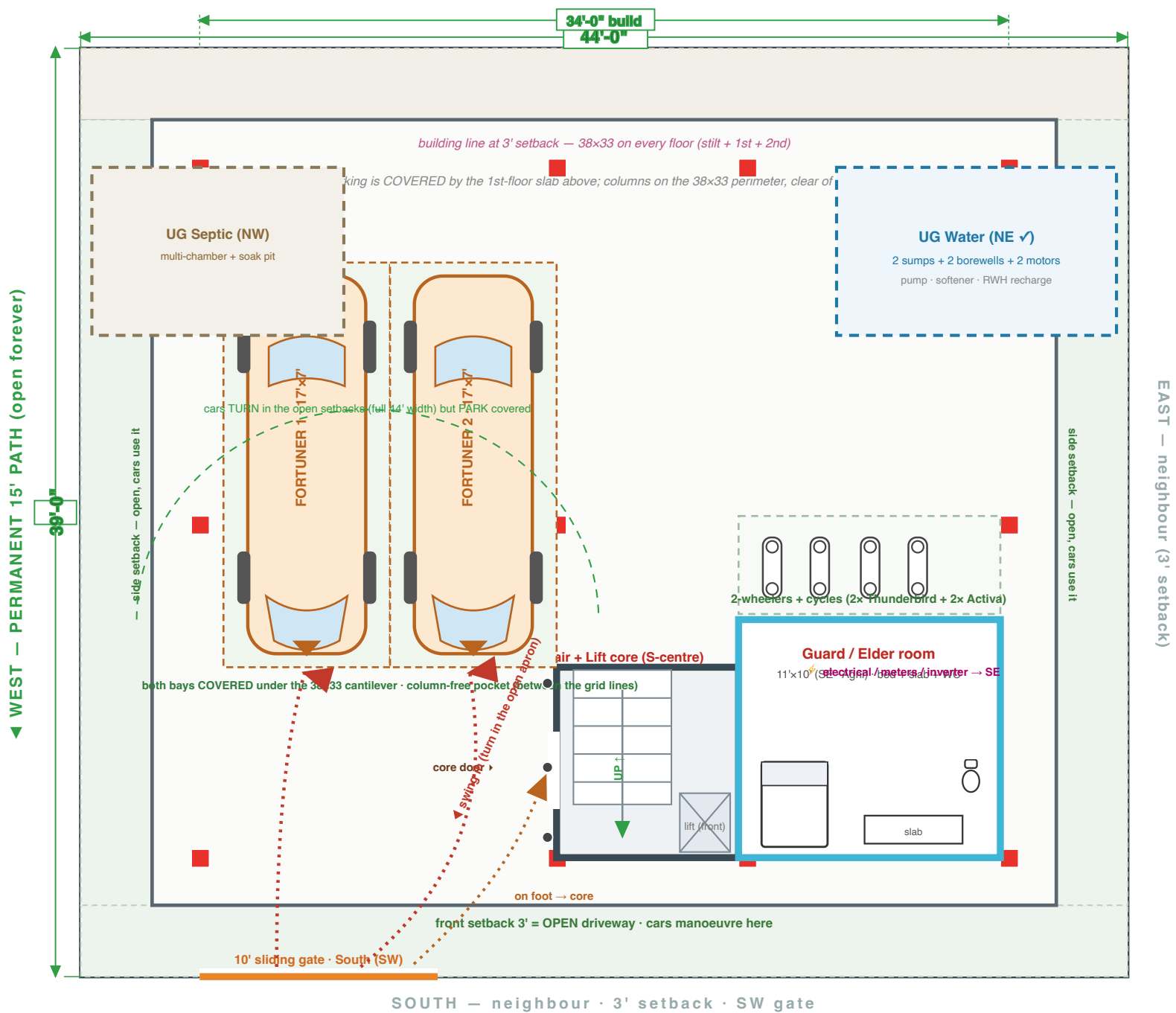


GROUND FLOOR — STILT · 38'x33' (3' setback)

Plot 44x39 ft · 3' setback all round (6' combined to neighbours; West faces a permanent 15' path) → 38x33 all floors · 2 Fortuners (covered)

NORTH — neighbour (3' rear setback)



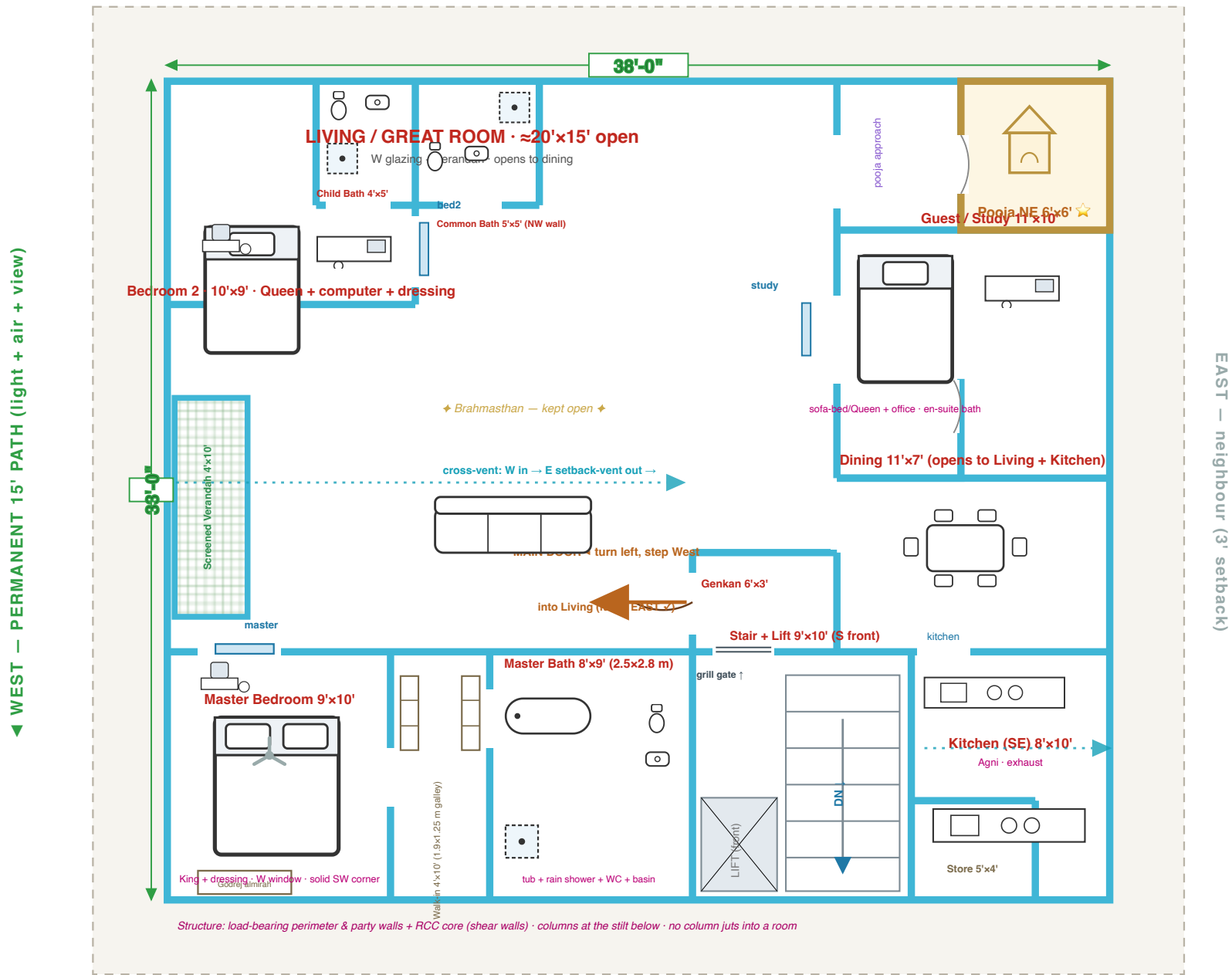
SOUTH — neighbour · 3' setback · SW gate

CMDA setbacks · Parking swept-path (honest test) · Vāstu
 Setbacks (TNCDDBR 2019):

FIRST FLOOR — BROTHER (Thangam) · 3 BHK · 38'x33'

Master bath 2.5x2.8 m · all 3 bedrooms en-suite + a common bath · EAST-facing (turn LEFT in the genkan, main door opens West) · West = permanent 15' path

NORTH — neighbour (3' setback)



SOUTH — neighbour (3' setback) · stair + lift down

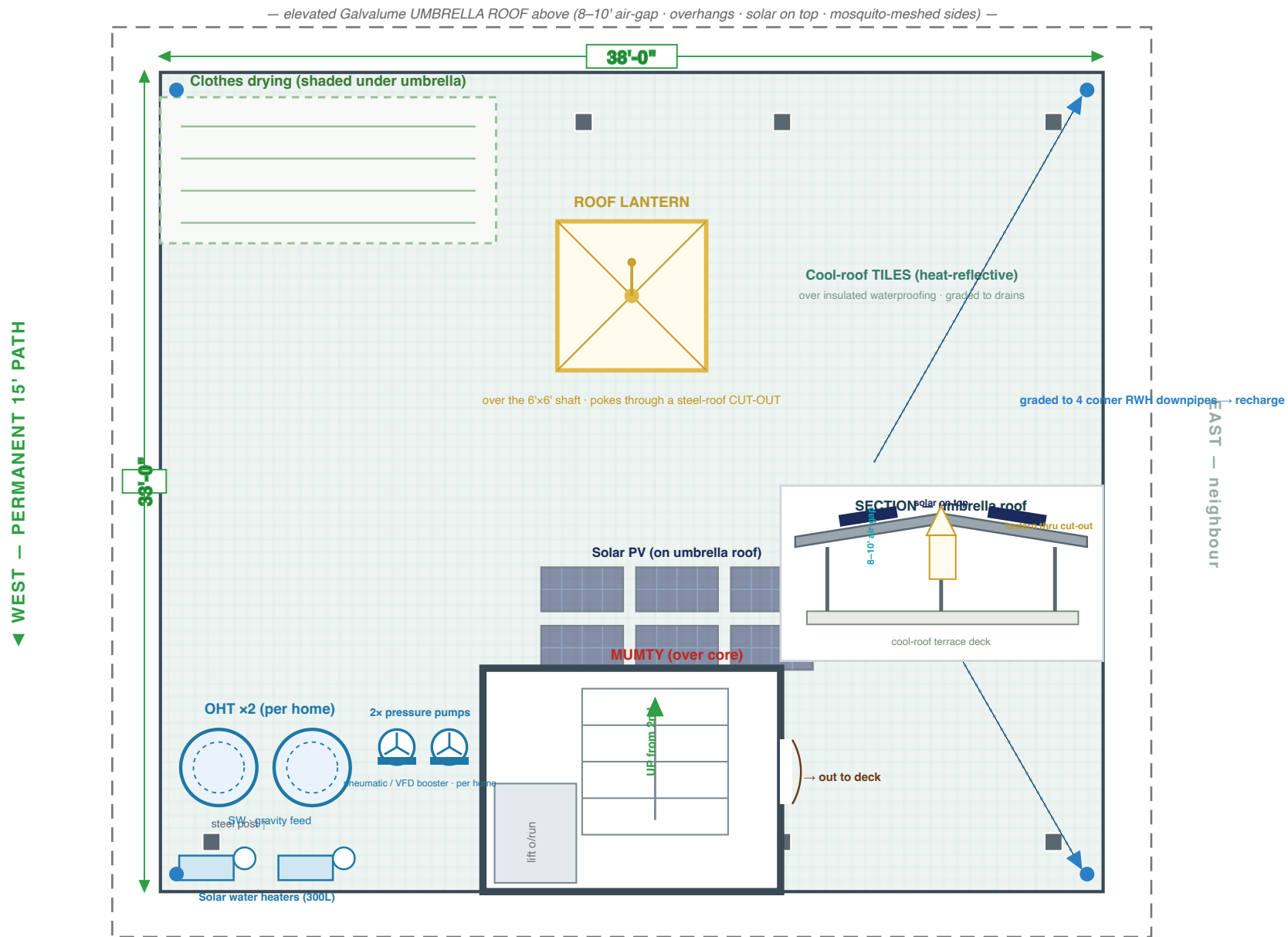
EAST-facing entry restored · 3 en-suite bedrooms + common bath · master bath 2.5x2.8 m

Entry (East-facing): up the SW stair (lift at the South front) → grill gate → Genkan →

TERRACE / ROOF — 38'x33' (over the cantilevered floors)

Mumty + lift over-run at the South front · roof lantern through the steel-roof cut-out · elevated steel umbrella roof + solar · OHT · shaded drying

NORTH — neighbour



SOUTH — neighbour · stair + lift up here

Terrace — Access · Roof system · Västu

Access: the South-front stair + lift continue to the